

UI Health Care DEI Task Force

Task Force Co-Chairs



Brooks Jackson, MD MBA
Vice President for Medical Affairs
Dean, Carver College of Medicine
Professor of Pathology

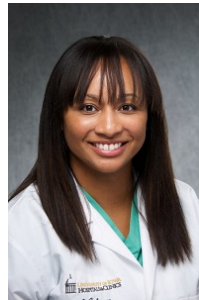


Denise Martinez, MD
Associate Dean, Diversity, Equity and Inclusion
Associate Professor, Family Medicine

Patient Initiated Identity Harassment/Health Disparities



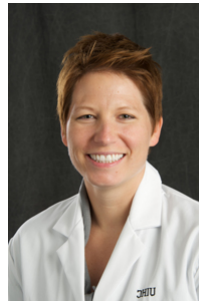
Suresh Gunasekaran, MBA
Associate Vice President, University of Iowa Hospitals
& Clinics Chief Executive Officer
Committee co-chair



Lastascia Coleman, ARNP, CNM
Clinical Assistant Professor of Obstetrics and
Gynecology
Committee co-chair



Lynette Cooper, DNP, ARNP, FNP-C
Assistant Professor, College of Nursing



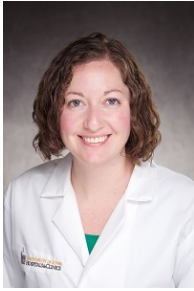
Katherine L. Imborek, MD
Director of Offsite Primary Care
Clinical Associate Professor of Family Medicine



Alex Nance, MHA
Director, Office of the Patient Experience



Andrew S. Nugent, MD
Chair and Department Executive Officer
Clinical Professor of Emergency Medicine



Stephanie Radke, MD
Clinical Assistant Professor, Obstetrics and Gynecology
Assistant Medical Clerkship Director



Adrian Silva
Hospital / Medical Interpreter

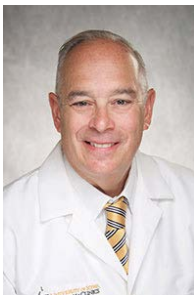
Environment & Climate



Patricia Winokur, MD
Executive Dean
Committee co-chair



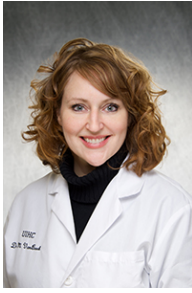
Derrick Willis, MPA
Director, Iowa's University Center for Excellence in
Developmental Disabilities
Committee co-chair



Gerard Clancy, MD
Senior Associate Dean, External Affairs
Professor of Psychiatry



Amal Shibli-Rahhal, MD
Assistant Dean, OSAC
Director, Endocrinology Fellowship Program
Associate Professor of Internal Medicine



Marta J. Van Beek, MD, MPH, FAAD
 Chief of Staff
 Program Director, Procedural Fellowship
 Director, Division of Dermatologic Surgery
 Clinical Professor of Dermatology



Anna White
 Medical Student
 Interprofessional Chair, Graduate & Professional
 Student Government

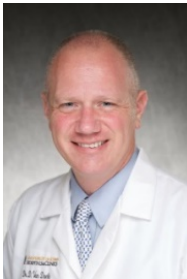


Aloha Wilks
 QA Analyst
 Professional Coding Division

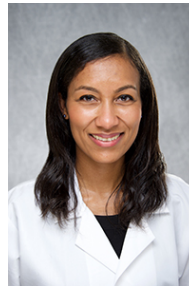


Li Wu, PhD
 Professor of Microbiology and Immunology
 Chair and Department Executive Officer

Recruitment & Retention



Douglas Van Daele, MD
 Executive Director, University of Iowa Physicians
 Professor of Otolaryngology
Committee co-chair



Kanya Ferguson, MD, FAAD
 Associate Dean, GME
 Clinical Director, Dermatology
 Clinical Assistant Professor of Dermatology
Committee co-chair



Keith D. Carter, MD, FACS
 Chair and Department Executive Officer
 Professor of Ophthalmology



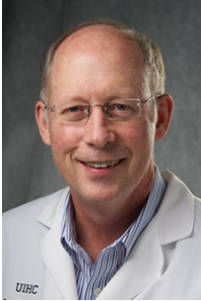
Curtis Chung, PMP, ITIL
 Director, Project Management Office



Joyce Goins-Fernandez, PhD
Clinical Assistant Professor of Pediatrics



Carlos Herriott
Creative Media Specialist
New Media Video Production



J. Lawrence Marsh, MD
Chair and Department Executive Officer
Professor of Orthopedics and Rehabilitation



Jana R. Wessels, JD, MBA
Associate Vice President for Human Resources



Michael E. Wright, PhD
Co-director, PREP@Iowa
Associate Professor of Molecular Physiology and
Biophysics