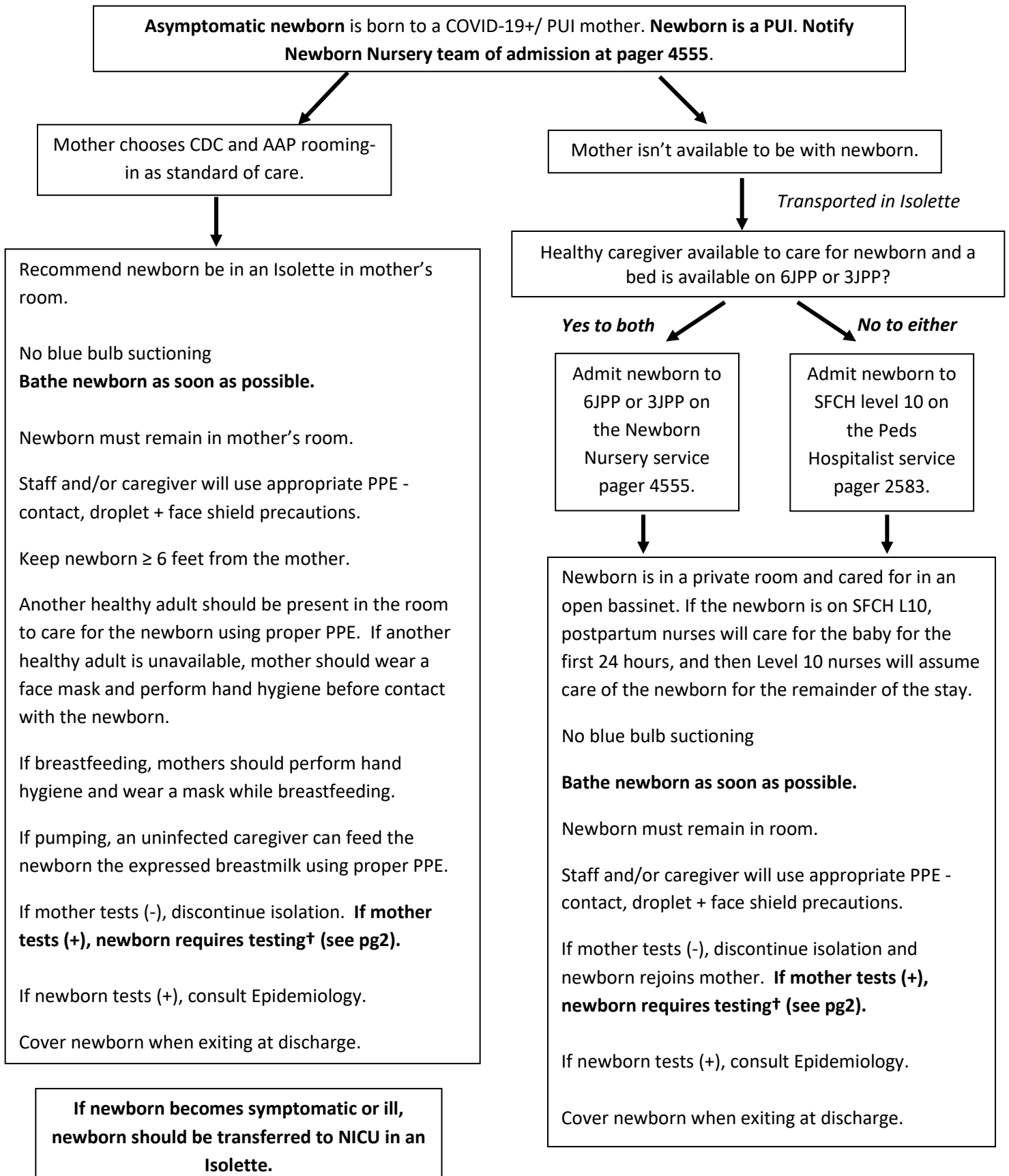


**Well Newborn Nursery COVID-19 Guidelines for Management of an Asymptomatic Newborn**



### † Testing per CDC guidelines

- All asymptomatic newborns should be tested prior to discharge. Discharge should not be delayed due to pending test results.
- Precautions should be continued throughout hospitalization regardless of newborn's test results.
- If LOS anticipated to be **> 48 hours**
  - Test at ~ 24 hours of life using NP swab
  - If newborn tests negative, repeat testing at 48 hours of life.
- If LOS anticipated to be **≤ 48 hours**
  - Single test prior to discharge between 24-48 hours of life using NP swab
- Use test COVID-19 Exposure: Asymptomatic Test (Lab 9023)